

# St. Johns FOOD SERVICE, INC.

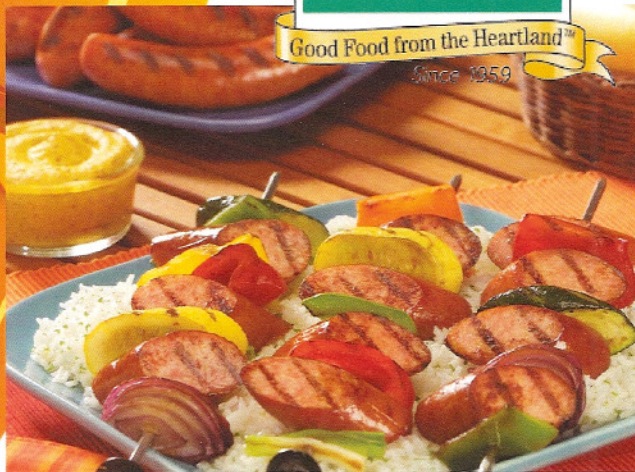
4 Louise St. • St. Augustine, FL 32084

**904-824-0493**

**Fax: 904-824-0203**



Good Food from the Heartland™  
Since 1959



<b>Beef Patty B/A G/M</b> 1100 • 20/8 oz .....	<b>\$41.50</b> cs
<b>Bacon C/Cut L/O 18/22 ct.</b> 3166 • 1/15 lb .....	<b>\$58.95</b> cs
<b>Farmstead Bacon 18/22 ct.</b> 3176 • 1/15 lb .....	<b>\$53.50</b> cs
<b>Bronze Medal Menu Ham</b> 3358 • 2/13 lb approx .....	<b>\$2.39</b> lb
<b>Sausage Link 2 oz</b> 3740 • 1/10 lb .....	<b>\$26.75</b> cs
<b>Sausage Link S/L P/C 1 oz.</b> 3750 • 1/10 lb .....	<b>\$27.95</b> cs
<b>6" Franks Beef 8/1</b> 7330 • 1/10 lb .....	<b>\$33.95</b> cs
<b>6" Franks Beef 6/1</b> 7336 • 1/10 lb .....	<b>\$33.95</b> cs
<b>Sliced Ham</b> 10220 • 4/3 lb .....	<b>\$40.95</b> cs



<b>Deli Turkey Breast</b> 5804 • 2/9 lb approx .....	<b>\$3.29</b> lb
<b>Smoked Turkey Breast</b> 5810 • 2/9 lb approx .....	<b>\$3.45</b> lb
<b>Turkey Breast Raw Foil Boneless</b> 5840 • 2/10 lb approx .....	<b>\$3.79</b> lb
<b>Tilapia Fillets 5/7 IQF</b> 14426 • 1/10 lb .....	<b>\$29.95</b> cs



<b>Coconut Milk</b> 27542 • 24/13.5 oz .....	<b>\$32.95</b> cs
<b>Sushi Ginger</b> 27552 • 12/1 lb .....	<b>\$37.95</b> cs
<b>Chili Mango Sauce</b> 27558 • 6/2 Liter .....	<b>\$74.95</b> cs
<b>Artichoke Quartered</b> 46076 • 6/10 lb .....	<b>\$77.50</b> cs
<b>Burgundy Cooking Wine</b> 50316 • 4/1 gal .....	<b>\$22.50</b> cs
<b>Sherry Cooking Wine</b> 50320 • 4/1 gal .....	<b>\$24.95</b> cs
<b>Sauterne Cooking Wine</b> 50330 • 4/1 gal .....	<b>\$24.95</b> cs
<b>Vinegar White Wine Spec</b> 52116 • 12/16.9 oz .....	<b>\$33.95</b> cs
<b>Greek Country Olive Mix</b> 87286 • 6/2 KG .....	<b>\$111.95</b> cs



We reserve the right to correct errors. Limited to stock on hand.  
Prices are subject to change.

Visit us on the web at [www.stjohnsfoods.com](http://www.stjohnsfoods.com)